



• Environmental Consulting
• Zoning/Planning
• Land Use Law

In Partnership with
Urban Systems Associates
New Orleans, Louisiana



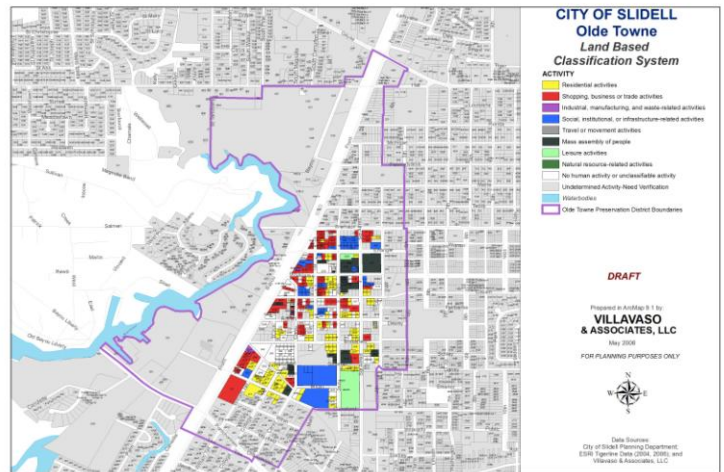
Slidell, Louisiana Comprehensive Master Plan – Phase I and Phase II

Phase I: 2005 – 2007

Phase II: 2008 -- 2009

Background

Slidell, Louisiana is located on the northeastern shore of Lake Pontchartrain in St. Tammany Parish, approximately 20 miles from downtown New Orleans. Slidell has approximately 30,000 residents and is near the intersection of three major interstate highways, Interstate 10, Interstate 12, and Interstate 59. All three of these highways serve as major storm evacuation routes for the New Orleans Metro Area. Hurricanes Katrina and Rita in 2005 flooded much of the City and many areas of Slidell suffered severe damage. In addition to recovery from the storms, Slidell will utilize this plan to help address many topics that are important to the long-term growth and health of the community including infrastructure development, housing choice, growth management, and environmental sustainability.



Phase II

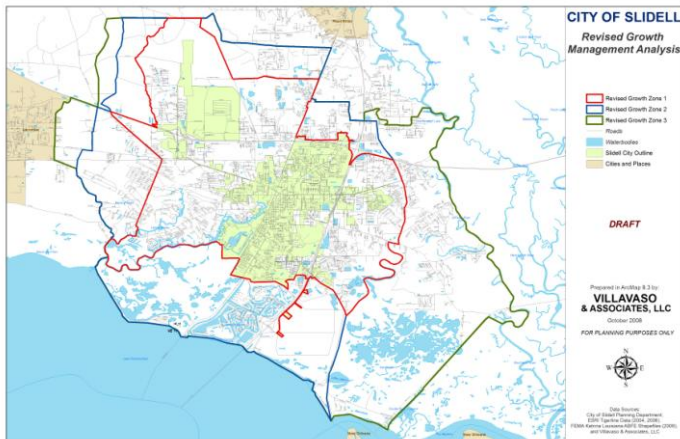
- Demographic/population growth rate and data update;
- Neighborhood-based public involvement and new visioning process with the assistance of the Citizen Advisory Committee;
- Determination of developable land based on a future land use plan, including a land demand analysis, gap analysis, and annexation strategy;
- Development of transportation improvements based on the TIP for St. Tammany Parish and community input; and
- Capital improvement plan.

Citizen Participation

The Slidell Comprehensive Master Plan was a consensus driven planning process with a heavy citizen participation component. The plan integrated a strong emphasis on neighborhood-based public involvement throughout the planning process. Planning District meetings, specific public meetings focusing on important topics such as housing and infrastructure, and Citizen Advisory Committee were held in various locations throughout the City.

Adoption

After detailed review of plan by residents City staff, and public officials, as well 30 plus public meetings, and The City of Slidell unanimously adopted The Slidell Tomorrow 20 Year Comprehensive Master Plan.



Approach

The “*Slidell Tomorrow*” 20 Year Comprehensive Master Plan was developed in a two part process. The following is partial list of task, goals, and recommendations addressed in each phase of the planning process:

Phase I

- Future land use plan;
- Development of neighborhood based planning districts;
- Transportation and infrastructure improvements;
- Neighborhood development standards;
- 20-year major thoroughfare plan; and
- Historic District Plan for Olde Town Slidell using LBCS analysis.