



- Environmental Consulting
- Zoning/Planning
- Land Use Law

Cameron Parish Land Use Plan and Subdivision Regulations

Cameron Parish, Louisiana

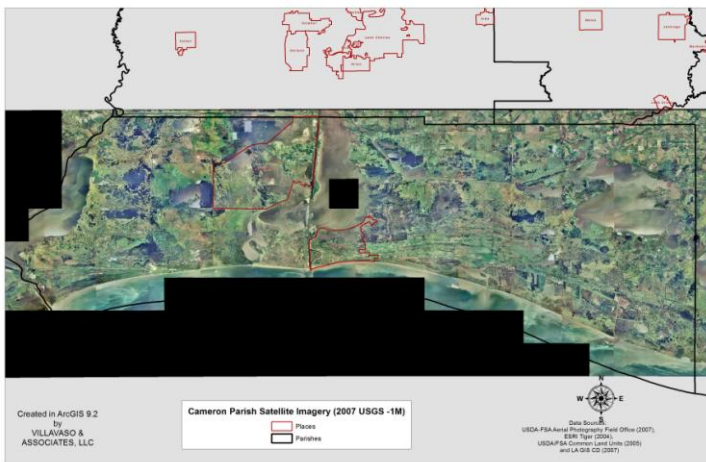
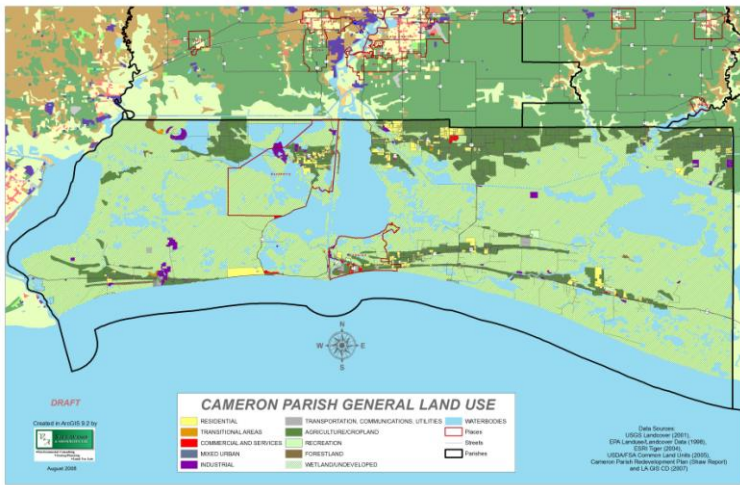
2009

Background:

Cameron Parish, located in the southwest corner of the state of Louisiana, is the most rural parish in Louisiana with a total land area of 1,932 square miles, of which 32% is water. Cameron Parish sustained heavy damage from Hurricane Rita in 2005 and Hurricanes Gustav and Ike in 2008 and as a result the population of the parish declined from nearly 10,000 residents in the early 2000s to approximately 7,500 residents in 2010. Among the many needs of Cameron Parish after Hurricane Ike was a master planning and code development process that addressed critical needs such as recovery planning, housing, public facilities and infrastructure, and economic development.

Approach:

While most Master Plan methodologies begin with a traditional mapping and land use exercise, we feel that an immediate focus on housing and economic development was the correct approach for Cameron Parish. The logical blending of these two critical Master Plan Elements in coordination with a heavy focus and utilization of the most current data and mapping tools available yielded a Land Use Plan that is grounded in the fundamental needs of a community recovering from disaster, namely jobs and housing.



Results:

The Cameron Parish Land Use Plan and Subdivision Regulations addressed the planning needs of the community to achieve a plan and code that not only meets the legal requirement of Louisiana law, but also gives the community a usable plan that is directly related to the vision and needs of the citizens.